



Underwriters Laboratories



## ELMEKON , PT.

Jl. Tubagus Angke No. 5 B  
Jelambar Baru Grogol Petamburan  
Jakarta 11460 Indonesia

Phone: +62 21 5694-2364 567-5914

Fax: +62 21 662-5506

E-mail: [elmekon@yahoo.com](mailto:elmekon@yahoo.com) &  
[elmekon@gmail.com](mailto:elmekon@gmail.com)



## Company Profile 2010

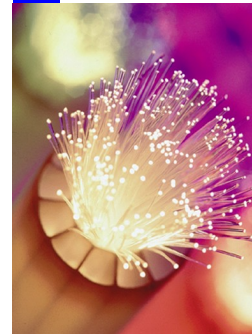
### ELMEKON, PT.



#### Products & Services :

- Electrical & Mechanical
- Lighting
- Trading
- Transportation
- Data Networking
- Contracting
- Installation
- Air Conditioning
- Telecommunication
- CCTV & IP Camera
- Parabola & Antenna

*over 10 International Principals  
more than 500 Products  
with over 1,000 Consumers & Corporate end users*



Date: October 2010

**Overview Satisfied Customers**



**ELMEKON, PT.** *Electrical, Mechanical, Trading, Transportation, Data Networking, Contracting & Installation Company*

**Parabola & Antenna**

YAGI, PF Antenna, Internet Wireless, VSAT, Coaxial Cables, Connectors, LNBF, Satellite Receivers, Actuators.



**Air Conditioners**

Residential & Central Air Conditioning. Split type, Cassette, Floor mounted, Ceiling mounted.



**CCTV and IP Camera**

CCTV, Webcam, DVR, Cables, Connectors.



**Telecommunication**

UTP Cables, Fibre Optics, LSA, PABX, IP-PBX, Telephone Cables.



**Installation Materials**

PVC Conduits and its accessories, Cable Clips, Cable Ties.



**Electric Panel Components**

Low Voltage Electrical Components : MCB, MCCB, ELCB, Contactors, Relays.



**Roof Truss (Atap Baja Ringan)**

C Channel, Z Channel, Reng, Talang Jurai.



**Electric Cables.**

Supreme and Eterna. NYM, NYY, NYA, NYA-F, NYMHYA, NYYHYO, NYFGbY.



## Overview

### World Class Products & Services



#### PHILIPS LIGHTING

Consumer Lighting, Professional Lighting, Lighting Gear & Lighting Electronics.



#### OSRAM LIGHTING

Consumer Lighting, Professional Lighting, Lighting Gear & Lighting Electronics.



#### PANASONIC WIRING DEVICES

Switches and Sockets.



#### AMP NETCONNECT

Voice and Data Networking. UTP, Optical Fibers, Connectors, Data Centers, Tools.



## ELMEKON, PT. Our Track Records

### Project Reference

**Bank Mandiri, Tbk, PT.,** SubContractor & Supplier of Lighting & Electrical

Equipments & Installation for its Bandung Branch Office Renovation in 2010.

**BNI Bank, Tbk, PT.,** Supplier of Lighting & Electrical Equipments for various Branch

Offices in 2003-2008.

**Bank DKI, PT.,** SubContractor & Supplier of Lighting & Electrical Equipments &

Installation for its Branch Office in 2009.

**BCA Bank, Tbk., PT.,** Supplier of Lighting Equipments for various Branches

and Sub Branches in 2007-2010.

**Tirta Investama, PT.,** the Holding Company of AQUA Bottled Drinking Water

Manufacturer which is part of the Multinational DANONE Group of France. Transportation Service

Contract 2010-2011.

**First Media, Tbk, PT.,** the Provider of FastNet Broadband Internet and Home Cable

Pay TV Services. Cable Installation Service Contract 2006-2010.

**Media Nusantara Citra, PT.,** the Indovision Pay TV Service Provider. Direct to

Home Satellite Installation Services Contract 2007.

**Direct Vision, PT.,** the ASTRO Pay TV Provider in Indonesia. Direct to Home Satellite

Installation Services Contract 2005-2006.

**Flextronics Pte Ltd (Singapore), Jakarta Rep Office Relocation.**

Supply & Installation of Data Networking, Electrical, Telephone & Lighting

SubContractor in 2005.



## Overview

## Time Line

# ELMEKON, PT.

## History & Development

Established on 4th May 2000 as PD. Toko PHILIPS, the Company began its business as a Reseller of Lighting and Electricals for the Consumers, Electricians, Contractors and other Retailers. In 2006, the Company set up a limited liability company PT. ELMEKON.



In 2006, the Company began contracting businesses when the Company signed Contracts with DIRECT VISION, PT. and FIRST MEDIA, PT., Tbk. Followed in 2007 by further contract signing with MEDIA NUSANTARA CITRA, PT., Tbk. Then in 2010, the Company signed another contract with TIRTA INVESTAMA, PT. (AQUA). Still in 2010, The Company expands into Distributorship of Lighting and Electricals.

The strategy shift helped ELMEKON, PT. in attaining more stable profit margins and limited the exposure to market volatilities, consequently accelerating the Company's growth.

At present, ELMEKON, PT. is continuously strengthening its Distribution, Contracting and Service Businesses by forging strategic alliances with International Partners possessing highly valuable products and/or technologies.

The Company Management consistently implements principles of Good Corporate Governance. In planning for future growth, the Management makes continuous efforts to improve the Professional Competence of the Company's employees through rigorous human resources development programs.

## ELMEKON, PT. Alliances & Strategic Partners



The collage features several logos and certificates:

- AMP NETCONNECT** logo and a certificate titled "AMP NETCONNECT Certified Installer Partner" for PT. Elmekon. The certificate includes the register number ID02030 and an expiry date of December 31, 2010. It is signed by Dudi Burdiana, Country Manager.
- Tyco Electronics** logo.
- OSRAM** logo.
- PHILIPS** logo with the tagline "sense and simplicity".
- hp** logo.
- TOSHIBA** logo with the tagline "Leading Innovation >>>".
- Panasonic** logo with the tagline "ideas for life".
- Schneider Electric** logo.

### Products & Services

Voice & Data Networking, Lighting, Electricals, Sockets & Switches, Air Conditioning, Printer Repair.